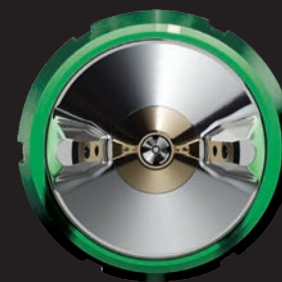
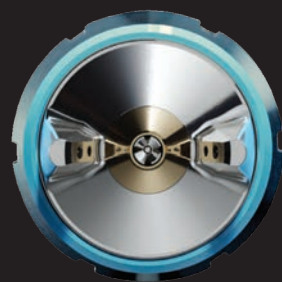




# WS400 LS400

*SERIES2*



SERIES 2: REDEFINING PAINT APPLICATION

designed by *pininfarina*





# WS-400 & LS-400 SERIES 2

## **SERIES 2: REDEFINING PAINT APPLICATION**

THE SERIES 2 WS-400 / LS-400  
RANGE TAKES PAINT APPLICATION  
TO ITS OPTIMUM LEVEL. ANEST  
IWATA CONTINUES TO STRIVE FOR  
PERFECTION, WITH SERIES 2 WE ARE  
EVEN CLOSER TO THAT GOAL.

## **SUPERIOR = S : A BADGE OF HONOUR**

THE S IN WS-400 AND LS-400 STANDS  
FOR SUPERIOR, AND WITH ITS LATEST  
IMPROVEMENTS, THAT IS PRECISELY  
WHAT THE NEW SERIES 2 RANGE  
REPRESENTS. SUPERIORITY!

THE COMBINATION  
OF PININFARINA'S ERGONOMIC  
DESIGN AND THE OPTIMISED  
PRE-ATOMISATION CAPABILITIES OF  
OUR SPLIT NOZZLE™ 2.0, THE SERIES  
2 RANGE TAKES PAINT APPLICATION  
TO A NEW LEVEL.

# WS LS

*SERIES 2*







JAPANESE  
HERITAGE  
MEETS  
PIONEERING  
MINDS



Anest Iwata boasts  
more than 95 years  
of experience in the  
coating industry,  
combining the most  
sophisticated traditional  
Japanese craftsmanship  
with the continuous  
pursuit of cutting-edge  
technology.

**Active** with Newest Technology



# SERIES 2: NEW FEATURES

## NEW ATOMISATION TECHNOLOGY

Split Nozzle™ 2.0: the latest generation of atomisation technology. Three types of Split Nozzle™ 2.0 have been developed to optimise every single auto refinishing process.



### WS BASE LINE

Compliant technology for the latest wet-on-wet base coat applications.



### WS CLEAR LINE

Compliant technology for a wider range of clearcoat applications.



### LS BASE LINE

HVLP technology for a wider range of base coat applications.



## ENHANCED ERGONOMICS AND USABILITY

Anest Iwata have developed the world's smallest quick-detachable digital manometer, the DPG-1. The DPG-1 fits into the gun handle without changing any design principles, the handle feels no heavier or larger with the digital manometer, maintaining Anest Iwata's trademark ergonomic design.



## SUPERIOR DESIGN:

Anest Iwata and Pininfarina have carefully researched and developed a new design for the Series 2, while still paying homage to the original **WS** and **LS**. For Series 2, we have refined the original design, resulting in a more contoured and lightweight body.

## SERIES 1



### SPRAY GUN BODY

Anest Iwata have refined micro-details of the Series 2 to achieve a **sleeker body shape and lighter weight**. The result offers a highly **optimised and ergonomic experience**, unrivalled by any competitor.

## SERIES 2



### TRIGGER

Optimised to provide excellent comfort and responsiveness for the user.

### ADJUSTERS

The shape and angle of the adjusters have been changed making them more comfortable and responsive, making fine tuning even easier.



## BEAUTY MEETS DURABILITY

The Series 2 digital version features a brand-new special surface treatment based on PVD technology (Physical Vapour Deposition). The PVD coating provides a harder wearing and more scratch resistant coating, while also also providing a darker more striking finish.



WS-400 BASE DIGITAL  
PVD COATING

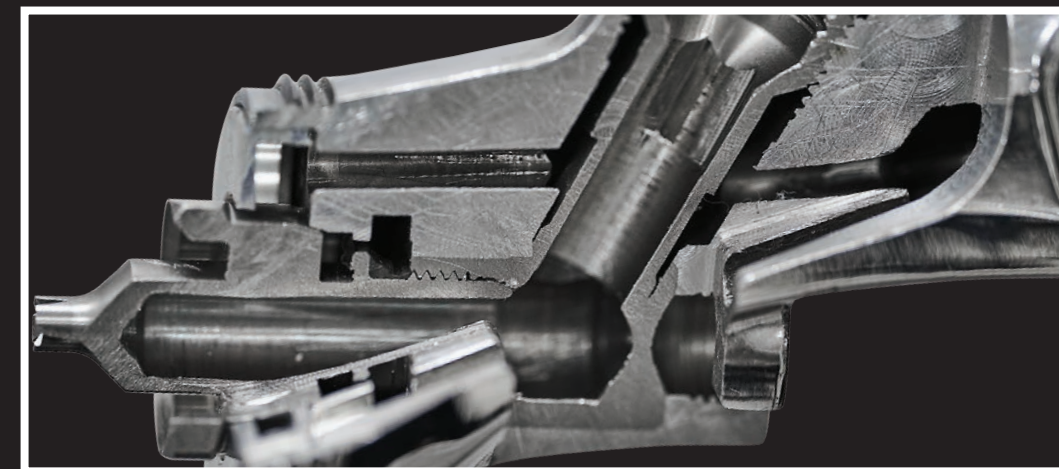
All Series 2 digital versions of the gun come with the new PVD coating and all non-digital versions come with the standard twilight chrome finish.



WS-400 BASE NON- DIGITAL  
TWILIGHT CHROME

## EXPERTISE IN ENGINEERING:

The Series 2 maintains Anest Iwata's outstanding engineering expertise, showcased by features such as the non-removable air flow baffle, no gaskets, double-tapered thread system and the conical shaped air cap design, these engineering feats maintain the consistency of the series 2's performance throughout its use and life cycle. Anest Iwata we continue to develop new technology making our products as good as they can be.





# WS/LS-400 TECHNICAL OVERVIEW

## A COMPACT, QUICK-DETACHABLE DIGITAL MANOMETER SYSTEM.

### SPRAYING MADE SMART, SIMPLE AND EASY!

Fully integrated, it maintains the balance, feel and design of the original WS/LS spray gun. What's more, thanks to the 'Click-Mag' locking system, it can easily be detached when cleaning the spray gun.

## CLICK-MAG SYSTEM

Spray gun after spraying



Use the Trigger Locking Clip and wash the spray gun



Turn the DPG-1 45° clockwise



Fit the DPG-1



Detach the DPG-1



Click and go!



- **PERFECT AESTHETICS, BLEND PERFECTLY INTO THE SHAPE OF THE SPRAY GUN.**

- **STABLE AND CONSISTENT READOUT, THE DPG-1 HAS BEEN DESIGNED TO PRODUCE A CONSISTENT READOUT WITH NO MICRO FLICKER.**

- **THE DPG-1 TURNS OFF AUTOMATICALLY WHEN NO PRESSURE IS APPLIED.**

- **TURNS ON AUTOMATICALLY WHEN THE GUN COMES TO PRESSURE.**

- **EASY MAINTENANCE - BATTERY CHANGES ARE SIMPLE AND EASY.**

THE DPG-1 ADDS NO EXTRA THICKNESS OR WEIGHT TO THE SPRAY GUN.

Non-digital VS digital = same weight (470 g)

## DPG-1 BATTERY SYSTEM

The sophisticated circuits that control the DPG-1 are not only amongst the most precise in the industry, but are **designed to give you the best user experience.**

And the best part is that **you can easily change the battery yourself in just minutes**, avoiding the inconvenience of having to send in the spray gun for maintenance.

The battery housing is sealed with 2 screws.

Simply unscrew them to open the housing, giving you direct access to the battery.

Battery sets including battery and gasket are available separately.



## WS/LS-400 TECHNICAL OVERVIEW - PART 2

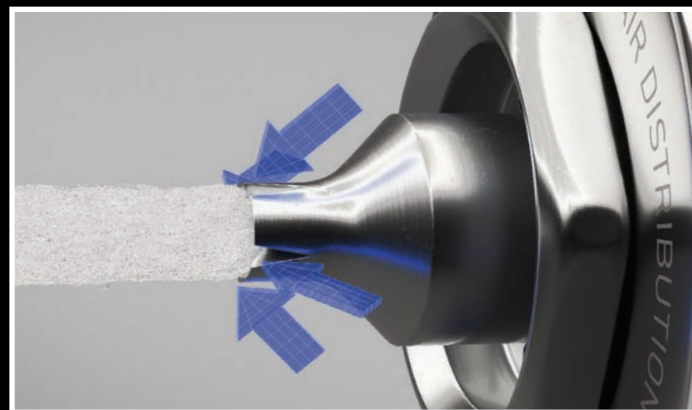
**Split Nozzle™ 2.0** is the difference, boasting the most advanced paint atomisation technology in the industry. Since the invention of pre-atomisation technology in 1993, Anest Iwata have never stopped striving to improve it. The most advanced pre-atomisation technology, 'Split Nozzle™ 2.0', was developed exclusively for the Series 2 spray guns to offer unrivalled performance.



Each model of the Series 2 range is optimised for their dedicated application, meaning they can deliver best in class performance straight out of the box. The Series 2 provides you with an effortless painting experience, allowing you to produce your best work.

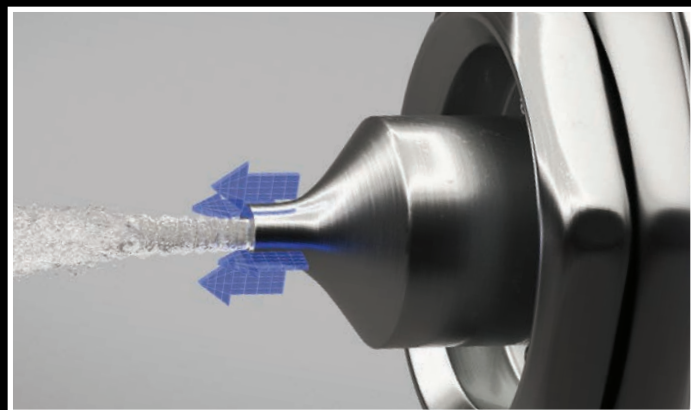
### SPLIT NOZZLE™ 2.0 vs. STANDARD NOZZLES: A COMPARISON

**Serrations in the nozzle:** The air stream is forced straight into the flow of material.



HIGHLY OPTIMISED ATOMISATION PROVIDES EXCELLENT PERFORMANCE.

**Standard Nozzle:** The air stream penetrates the material from the outside only.



LIMITED FACTORS TO INFLUENCE ATOMISATION AND PERFORMANCE.

## THE ONE AND ONLY ANEST IWATA FAN PATTERN

Often imitated, never duplicated: **ANEST IWATA's unique fan pattern** remains one of a kind.

Thanks to improved atomisation by **Split Nozzle™ 2.0 Technology**, our engineers are not limited by the lack of adjustable parameters that restrict traditional nozzles, allowing them to **craft the perfect fan pattern**:

- CHARACTERISED BY A FLAT SHAPE.
- BALANCED, EVEN DISTRIBUTION OF THE DROPLETS.
- APPLICATION MADE EASY AND EFFORTLESS.
- NO NEED TO WORRY ABOUT IMPERFECT OVERLAPS.

### BUT WAIT, THERE'S MORE:

- Low material consumption: keeping costs low and limiting environmental impact.
- Perfect colour reproduction: less manual adjustment.
- Perfect finish: due to state of the art technology.
- Improved process safety: less reworking, less hassle.

SCAN TO SEE THE SERIES 2 IN ACTION!





## WS/LS-400 TECHNICAL OVERVIEW - PART 3



### 1. WS-400 BASE

OBS stands for Optimum Base coat Settings.

The OBS nozzles have been engineered to produce a flat and even spray pattern with material throughout.

At Anest Iwata we have re-engineered the OBS air caps and nozzles to create an out the box experience, producing best in class performance. The OBS nozzles are classified as follows:

1.3 OBS: for standard conditions.

1.3 OBS+1: for dry conditions.

1.3 OBS-0: for humid conditions.

BF nozzle settings:

BF stands for type B wet-on-wet applications. The BF nozzles are classified as follows:

BF-S: for standard conditions

BF-X: for dry conditions.

### WS-400 BASE, LS-400 BASE & WS-400 CLEAR SERIES 2

#### 2. LS-400 BASE

The new LS-400 Base is a unique HVLP Hybrid spray gun predominantly designed for the application of both water-borne and solvent-based base coats.

The LS-400 BASE has a slightly larger atomised droplet due to its HVLP characteristics, but split nozzle technology enables the droplets stay consistent and uniform in size and shape.

LS-400 Base comes in two nozzle variants, ET and ETS.

The ET nozzles are designed for standard and humid conditions.

The ETS, comes in the same nozzle sizes, but is designed specifically for dry conditions.

The ETS has slightly more centre material, allowing for a slightly wetter and faster application; this helps to deliver material from spray gun to panel without it drying in-between.

#### 3. WS-400 CLEAR: HD NOZZLES

HD stands for High Delivery, with four different nozzle sizes available.

The HD nozzles make the application of clear coats effortless.

Split Nozzle™ 2.0 technology breaks up the clearcoat in a way that standard nozzles cannot, giving the painter an unrivalled experience.

The HD spray nozzle, combined with their specific air caps, produces a flat and even spray pattern; reducing overload and boil due to no central wetness.

The HD nozzles also offer another base coat option when a wetter application is required in certain temperatures and conditions.



**WS-400  
BASE SR2**

**LS-400  
BASE SR2**

**WS-400  
CLEAR SR2**



# SET OPTIONS & CONTENTS

The new Series 2 range  
of spray guns are available in **different  
case and box variations** to meet your  
specific needs.

## ★★★ SUPERIOR SET\*

TWO SERIES 2 SPRAY GUNS  
TWO 600 ML GRAVITY CUPS  
CLEANING BRUSHES  
UNIVERSAL SPANNER

**WITH DIGITAL VERSION:** TRIGGER CLIP/PIN CAP

**WITH NON-DIGITAL VERSION:** HVC AIR PRESSURE REGULATOR.

\*PLEASE REFER TO THE TABLE ON THE NEXT PAGE FOR THE FULL RANGE OF AVAILABLE COMBINATIONS.



## ★★ PRO SET

**With digital version**

WS-400/LS-400 Series 2 Digital Spray Gun  
600 ml Gravity Cup - DPG-1 Module  
Cleaning Brushes - Universal Spanner  
Trigger Clip/Pin Cap.

**With standard version**

WS-400/LS-400 Series 2 Spray Gun  
600 ml Gravity Cup - HVC Air Pressure  
Regulator - Cleaning Brushes  
Universal Spanner.

## ★ ECO SET

WS-400/LS-400 Series 2 Non Digital  
Spray Gun - 600 ml Gravity Cup  
Cleaning Brushes - Universal Spanner.





PREMIUM BASECOAT

WS-400 SERIES 2 BASE

## TECHNICAL DATA

• Air Nipple: G1/4" • Fluid Nipple: G1/4"

setup	type	description/climate	model name (digital/non digital)	cap	bar**	Nl/min	mm***
OBS SETUP	1.3 OBS-0	HUMID	WS-400-SR2D-OBS-0 WS-400-SR2-OBS-0	WS-400-02-OBS	2.0	370	255
	1.3 OBS	STANDARD*	WS-400-SR2D-OBS WS-400-SR2-OBS				255
	1.3 OBS+1	DRY	WS-400-SR2D-OBS+1 WS-400-SR2-OBS+1				260
BF SETUP	BF-S	STANDARD*	WS-400-SR2D-BF-S WS-400-SR2-BF-S	WS-400-03-BF			250

• OBS series: for type A wet-on-wet application • BF series: for type B wet-on-wet application  
\*Standard climate range: 15-30°C with a humidity of 30-75% RH \*\*Suggested gun inlet pressure during spraying. \*\*\*Fan width at a spray distance of 150 mm.

## TECHNICAL DATA

• HD (High Delivery) • Air Nipple: G1/4" • Fluid Nipple: G1/4"

setup	type	application speed	model name (digital/non digital)	cap	bar*	Nl/min	mm**
HD SETUP	1.2 HD	CONTROL	WS-400 SR2D-12HD WS-400 SR2-12HD	WS-400-03	2.0	370	245
	1.3 HD	STANDARD	WS-400-SR2D-13HD WS-400-SR2-13HD				250
	1.4 HD	SPEED	WS-400-SR2D-14HD WS-400-SR2-14HD				255
	1.5 HD	HIGH SPEED	WS-400-SR2D-15HD WS-400-SR2-15HD				260

\*Suggested gun inlet pressure during spraying. \*\*Fan width at a spray distance of 150 mm.

## TECHNICAL DATA

• Air Nipple: G1/4" • Fluid Nipple: G1/4"

setup	type	application speed	model name (digital/non digital)	cap	bar*	Nl/min	mm**
ET SETUP STANDARD	1.2 ET	CONTROL	LS-400-SR2D-1206 LS-400-SR2-1206	LS-400-06	1.8	400	230
	1.3 ET	STANDARD	LS-400-SR2D-1306 LS-400-SR2-1306				235
	1.4 ET	SPEED	LS-400-SR2D-1406 LS-400-SR2-1406				240
	1.5 ET	HIGH SPEED	LS-400-SR2D-1506 LS-400-SR2-1506				245
ETS SETUP DRY	1.2 ETS	CONTROL	LS-400-SR2D-12S06 LS-400-SR2-12S06	LS-400-06	1.8	420	200
	1.3 ETS	STANDARD	LS-400-SR2D-13S06 LS-400-SR2-13S06				205
	1.4 ETS	SPEED	LS-400-SR2D-14S06 LS-400-SR2-14S06				210
	1.5 ETS	HIGH SPEED	LS-400-SR2D-15S06 LS-400-SR2-15S06				215

• ET series: for standard climate application • ETS series: for dry climate application \*\*Suggested gun inlet pressure during spraying. \*\*Fan width at a spray distance of 150 mm.

## ORDER INFORMATION

WS-400 BASE DIGITAL	1.3 OBS-0	1.3 OBS	1.3 OBS+1	BF-S
PRO SET	130189A0	130190A0	130191A0	130250A0
SUPERIOR SET	See next page for the full range of available combinations.			
WS-400 BASE	1.3 OBS-0	1.3 OBS	1.3 OBS+1	BF-S
PRO SET	130611A0	130612A0	130613A0	130614A0
ECO SET	130256A0	130257A0	130258A0	130259A0
SUPERIOR SET	See next page for the full range of available combinations.			
AIR CAP SET	93008310			93018140
FLUID NOZZLE & NEEDLE	93008930	93008340	93008990	93018150

## ORDER INFORMATION

WS-400 CLEAR DIGITAL	1.2 HD	1.3 HD	1.4 HD	1.5 HD
PRO SET	130193A0	130194A0	130195A0	130196A0
SUPERIOR SET	See next page for the full range of available combinations.			
WS-400 CLEAR	1.2 HD	1.3 HD	1.4 HD	1.5 HD
PRO SET	130615A0	130616A0	130617A0	130618A0
ECO SET	130261A0	130262A0	130263A0	130264A0
SUPERIOR SET	See next page for the full range of available combinations.			
AIR CAP SET	93009030			
FLUID NOZZLE & NEEDLE	93009140	93009060	93009160	93009180

## ORDER INFORMATION

LS-400 BASE DIGITAL	1.2 ET	1.3 ET	1.4 ET	1.5 ET	1.2 ETS	1.3 ETS	1.4 ETS	1.5 ETS
PRO SET	130213A0	130214A0	130215A0	130216A0	130217A0	130218A0	130219A0	130220A0
SUPERIOR SET	See next page for the full range of available combinations.							
LS-400 BASE	1.2 ET	1.3 ET	1.4 ET	1.5 ET	1.2 ETS	1.3 ETS	1.4 ETS	1.5 ETS
PRO SET	130619A0	130620A0	130621A0	130622A0	130623A0	130624A0	130625A0	120626A0
ECO SET	130265A0	130266A0	130267A0	130268A0	130269A0	130270A0	130271A0	130272A0
SUPERIOR SET	See next page for the full range of available combinations.							
AIR CAP SET	93008030							
FLUID NOZZLE & NEEDLE	93008160	93008070	93008180	93008200	93008230	93008250	93008270	93008290

# SUPERIOR SET COMBINATION CHART

## PICK YOUR CLEARCOAT GUN

### COMPLIANT

		WS-400 1.2 HD		WS-400 1.3 HD		WS-400 1.4 HD		WS-400 1.5 HD	
		STANDARD	DIGITAL	STANDARD	DIGITAL	STANDARD	DIGITAL	STANDARD	DIGITAL
WS-400 BASE OBS	STANDARD	130283A0SS	130283A0SD	130284A0SS	130284A0SD	130285A0SS	130285A0SD	130286A0SS	130286A0SD
	DIGITAL	130283A0DS	130283A0DD	130284A0DS	130284A0DD	130285A0DS	130285A0DD	130286A0DS	130286A0DD
WS-400 BASE OBS-0	STANDARD	130274A0SS	130274A0SD	130275A0SS	130275A0SD	130276A0SS	130276A0SD	130277A0SS	130277A0SD
	DIGITAL	130274A0DS	130274A0DD	130275A0DS	130275A0DD	130276A0DS	130276A0DD	130277A0DS	130277A0DD
WS-400 BASE OBS+1	STANDARD	130291A0SS	130291A0SD	130292A0SS	130292A0SD	130293A0SS	130293A0SD	130294A0SS	130294A0SD
	DIGITAL	130291A0DS	130291A0DD	130292A0DS	130292A0DD	130293A0DS	130293A0DD	130294A0DS	130294A0DD
WS-400 BASE BF-S	STANDARD	130300A0SS	130300A0SD	130301A0SS	130301A0SD	130302A0SS	130302A0SD	130303A0SS	130303A0SD
	DIGITAL	130300A0DS	130300A0DD	130301A0DS	130301A0DD	130302A0DS	130302A0DD	130303A0DS	130303A0DD

### HVLP

		LS-400 1.2							
		STANDARD	DIGITAL	STANDARD	DIGITAL	STANDARD	DIGITAL	STANDARD	DIGITAL
LS-400 BASE 1.2 ET	STANDARD	130327A0SS	130327A0SD	130337A0SS	130337A0SD	130346A0SS	130346A0SD	130354A0SS	130354A0SD
	DIGITAL	130327A0DS	130327A0DD	130337A0DS	130337A0DD	130346A0DS	130346A0DD	130354A0DS	130354A0DD
LS-400 BASE 1.3 ET	STANDARD	130328A0SS	130328A0SD	130338A0SS	130338A0SD	130347A0SS	130347A0SD	130355A0SS	130355A0SD
	DIGITAL	130328A0DS	130328A0DD	130338A0DS	130338A0DD	130347A0DS	130347A0DD	130355A0DS	130355A0DD
LS-400 BASE 1.4 ET	STANDARD	130329A0SS	130329A0SD	130339A0SS	130339A0SD	130348A0SS	130348A0SD	130356A0SS	130356A0SD
	DIGITAL	130329A0DS	130329A0DD	130339A0DS	130339A0DD	130348A0DS	130348A0DD	130356A0DS	130356A0DD
LS-400 BASE 1.5 ET	STANDARD	130332A0SS	130332A0SD	130342A0SS	130342A0SD	130351A0SS	130351A0SD	130359A0SS	130359A0SD
	DIGITAL	130332A0DS	130332A0DD	130342A0DS	130342A0DD	130351A0DS	130351A0DD	130359A0DS	130359A0DD
LS-400 BASE 1.2 ETS	STANDARD	130331A0SS	130331A0SD	130341A0SS	130341A0SD	130350A0SS	130350A0SD	130358A0SS	130358A0SD
	DIGITAL	130331A0DS	130331A0DD	130341A0DS	130341A0DD	130350A0DS	130350A0DD	130358A0DS	130358A0DD
LS-400 BASE 1.3 ETS	STANDARD	130332A0SS	130332A0SD	130342A0SS	130342A0SD	130351A0SS	130351A0SD	130359A0SS	130359A0SD
	DIGITAL	130332A0DS	130332A0DD	130342A0DS	130342A0DD	130351A0DS	130351A0DD	130359A0DS	130359A0DD
LS-400 BASE 1.4 ETS	STANDARD	130333A0SS	130333A0SD	130343A0SS	130343A0SD	130352A0SS	130352A0SD	130360A0SS	130360A0SD
	DIGITAL	130333A0DS	130333A0DD	130343A0DS	130343A0DD	130352A0DS	130352A0DD	130360A0DS	130360A0DD
LS-400 BASE 1.5 ETS	STANDARD	130334A0SS	130334A0SD	130344A0SS	130344A0SD	130353A0SS	130353A0SD	130361A0SS	130361A0SD
	DIGITAL	130334A0DS	130334A0DD	130344A0DS	130344A0DD	130353A0DS	130353A0DD	130361A0DS	130361A0DD

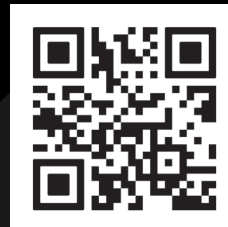


PICK YOUR BASECOAT GUN





SCAN TO FIND US AND MORE ONLINE



ANEST IWATA U.K. Ltd.  
St. Neots, Cambridgeshire - ENGLAND